

Test: Primary 3 - Term 4 (SA2) Science (Henry Park)

Points: 57 points

Name: _____

Score: _____

Date: _____

Signature: _____

Select multiple choice answers with a cross or tick:

Only select one answer

Can select multiple answers

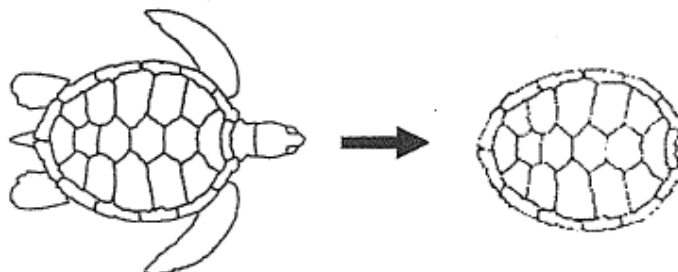
Question 1 of 48

Primary 3 Science (Term 4) 2 pts

Section A: (20 x 2 marks= 40 marks)

For each question from 1 to 20, four options are given. One of them is the correct answer.

When John touched a turtle, it felt threatened and retreated into its shell, as shown in the diagram below.



Which one of the following characteristics of living things does the turtle show?

-
- A) Living things grow.
- B) Living things reproduce.
- C) Living things respond to changes.
- D) Living things need air, food and water.





Look at the classification table below.

| Group 1 | Group 2 |
|---------|----------|
| shorts | knife |
| skirt | shirt |
| towel | fork |
| pants | scissors |

Which one of the following is classified wrongly?

-
- A) fork
 - B) shirt
 - C) knife
 - D) scissors

Study the classification table shown below.

| Group X | Group Y |
|---|--|
|  <p>rose plant</p> |  <p>bird's nest</p> |
|  <p>hibiscus</p> |  <p>rabbit's foot</p> |

How have the plants been classified?

| | Group X | Group Y |
|-----|---------------------|--------------------|
| (1) | land plants | water plants |
| (2) | flowering | non-flowering |
| (3) | strong stem | weak stem |
| (4) | reproduce by spores | reproduce by seeds |

- A) 1
- B) 2
- C) 3
- D) 4

Look at the two groups of animals.



Which one of the following characteristics is used to group the animals?

- A) size of body
- B) types of food
- C) body covering
- D) where they live

Three students made the following statements on fungi.

Xin Yan : Yeast is a type of fungi.

Yasman : Fungi reproduce from spores.

Zachary : Fungi make their own food.

Which of the following statements about fungi are correct?

- A) Zachary and Yasman only
- B) Xin Yan and Yasman only
- C) Xin Yan and Zachary only
- D) Yasman, Xin Yan and Zachary

Question 6 of 48

Primary 3 Science (Term 4) 2 pts

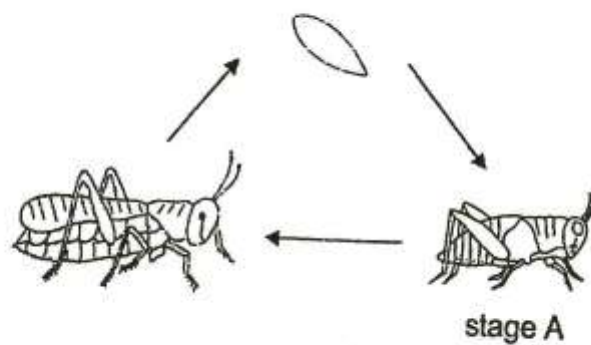
Which of the following organisms can only be seen through microscope?

- A) Bacteria and yeast
- B) Moss and yeast
- C) Mould and ferns
- D) Mushroom and bacteria

Question 7 of 48

Primary 3 Science (Term 4) 2 pts

The diagram below shows the life cycle of animal X.

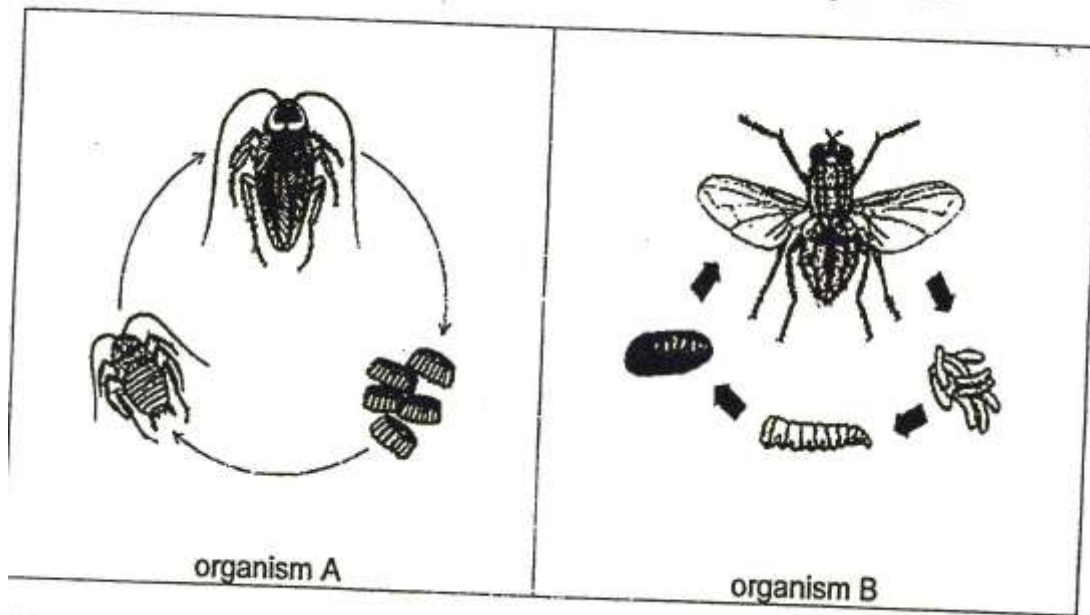


Which one of the following correctly describes animal X at stage A?

(1) Animal X does not eat at all.

- A) Animal X does not eat at all.
- B) Animal X does not have wings.
- C) Animal X does not move around.
- D) Animal X does not respond to changes.

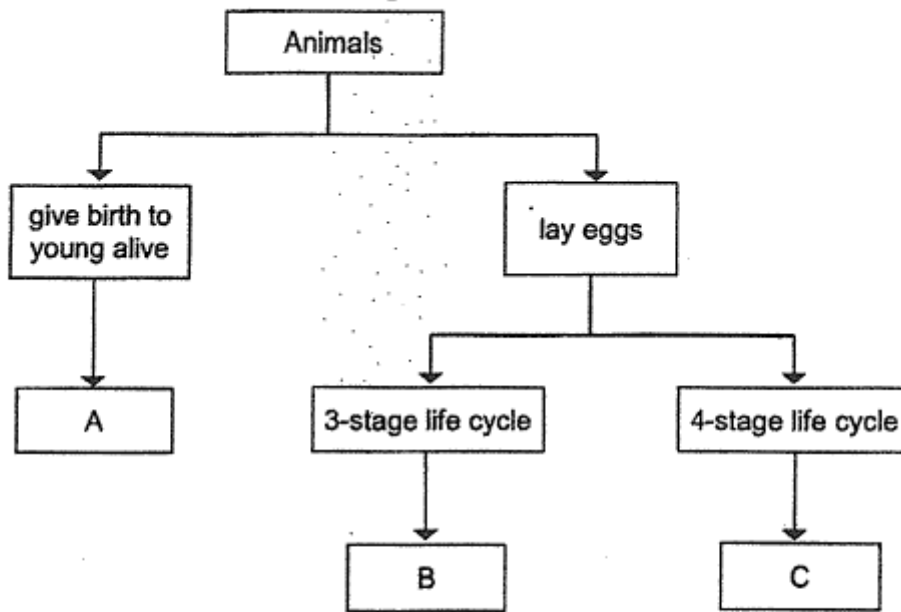
The diagram below shows the life cycle of organism A and organism B.



Which statement is **not** correct?

- A) Organism A has three stages in its life cycle.
- B) Organism B has four stages in its life cycle.
- C) The young of organism A resembles the adult.
- D) The young of organism B resembles the adult.

Study the classification table below.

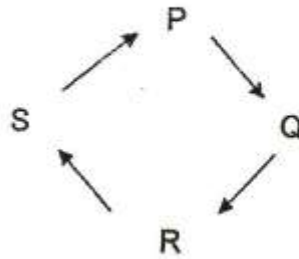


Which one of the following correctly identifies A, B and C?

| | A | B | C |
|-----|---------|-----------|-----------|
| (1) | frog | cockroach | beetle |
| (2) | cat | mosquito | frog |
| (3) | horse | chicken | beetle |
| (4) | chicken | frog | cockroach |

- A) 1
- B) 2
- C) 3
- D) 4

The diagram below shows the life cycle of a butterfly.



Jenny observed and recorded the number of leaves eaten by a butterfly at the different stages, P, Q, R and S, in the table below.

| Stage | Number of leaves eaten in a day |
|-------|---------------------------------|
| P | 0 |
| Q | 0 |
| R | 0 |
| S | 8 |

Which stage is most likely the adult stage?

-
- A) P
 - B) Q
 - C) R
 - D) S

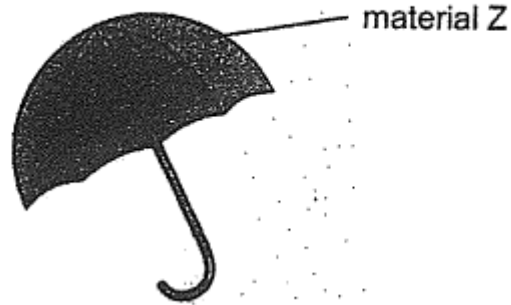
Michael has four objects K, L, M and N made of different materials. He measured the mass of each object before putting it in water. He recorded his observations in the table below.

| Object | Material | Mass (g) | Floats in water |
|--------|----------|----------|-----------------|
| K | metal | 6 | x |
| L | plastic | 6 | ✓ |
| M | wood | 15 | ✓ |
| N | plastic | 18 | x |

Based on the information given, which one of the following statements is correct?

-
- A) Object N has the biggest mass.
 - B) All objects made of plastic float.
 - C) All objects with a small mass float.
 - D) Object K has a bigger mass than object.

An umbrella protects the user from the Sun and rain.



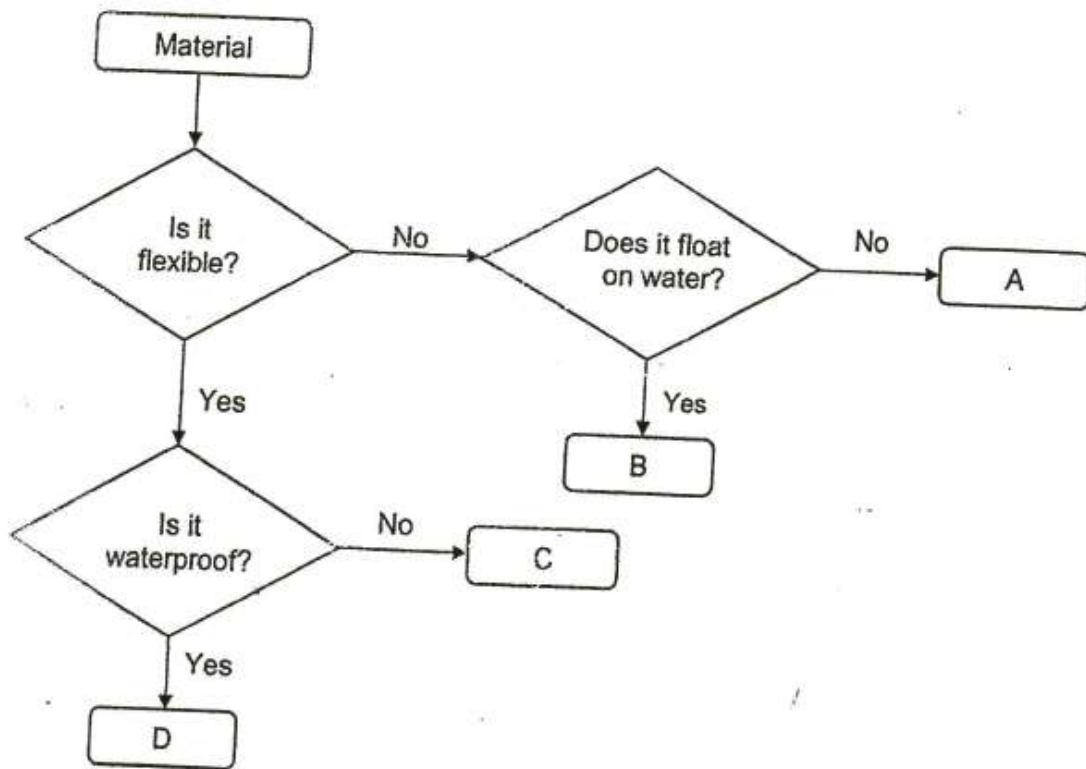
The table below shows some properties of materials.

| | Properties |
|---|--|
| A | strong |
| B | waterproof |
| C | allows most light to pass through |

Which of the following properties should material Z have?

-
- A) A and B only
 - B) A and C only
 - C) B and C only
 - D) A, B and C

13. Study the flowchart below.



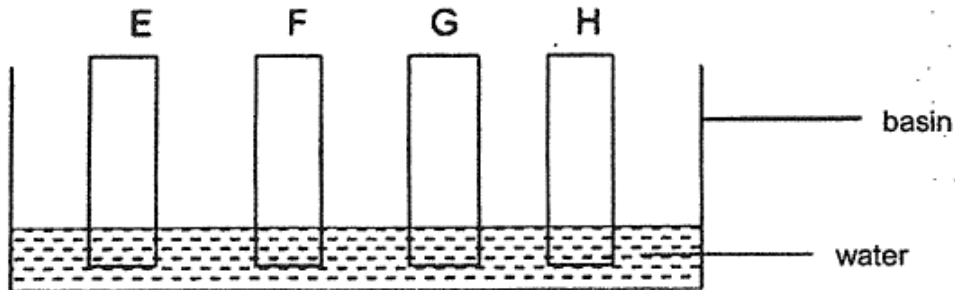
Based on the flowchart given, which material, A, B, C or D, is suitable for making part G of the camping tent shown below?



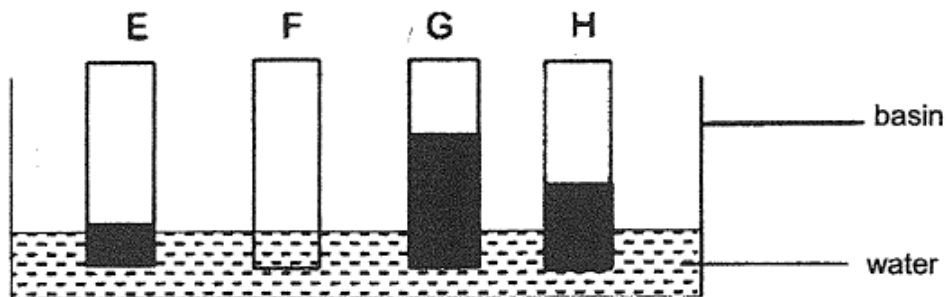
- A) A
- B) B
- C) C
- D) D

Ahmad set up an experiment to find out which material, E, F, G or H absorbed the most amount of water.

He placed four similar strips of materials E, F, G and H into a basin of water as shown below.



The diagram below shows the strips of materials after 30 minutes. The black patches represent the water absorbed by the materials.

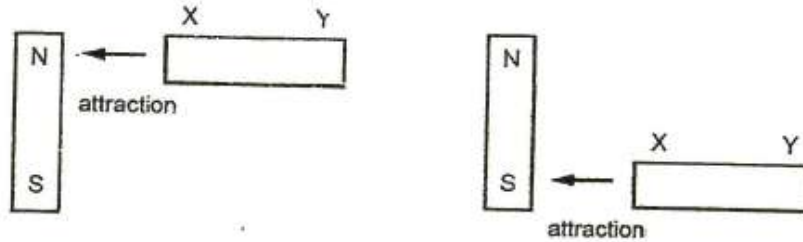


Which material is **most** suitable to make a bath towel?

-
- A) E
 - B) F
 - C) G
 - D) H

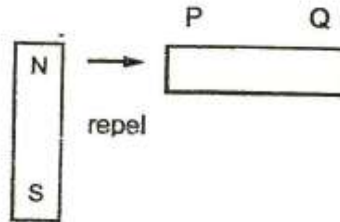
A metal rod XY is placed near a bar magnet.

End X is **attracted** when it is placed near to the North Pole (N) of the magnet, and also when it is placed near to the South Pole (S) as shown below.



Another metal rod PQ is also placed near the same bar magnet.

End P is **repelled** when it is placed near to the North Pole (N) of the magnet as shown below.

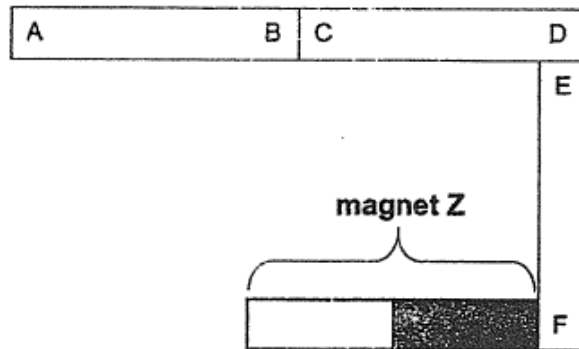


Which of the following will be observed when **end Y** and **end P** are placed near to the South Pole (S) of the bar magnet?

| | end Y near South Pole (S) | end P near South Pole (S) |
|-----|---------------------------|---------------------------|
| (1) | attract | attract |
| (2) | attract | repel |
| (3) | repel | attract |
| (4) | repel | repel |

- A) 1
- B) 2
- C) 3
- D) 4

Three similar bar magnets with their poles labelled A, B, C, D, E and F are arranged with the bar magnet Z as shown in the diagram below.



Which one of the following arrangements is possible?

- (1)

| | | | |
|---|---|---|---|
| A | B | D | C |
|---|---|---|---|
- (2)

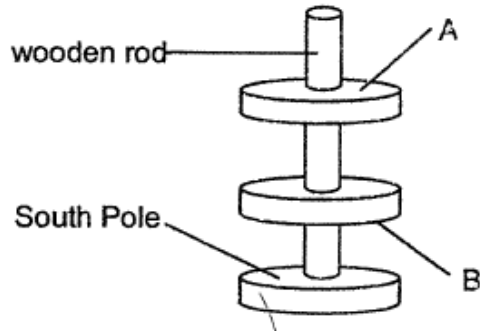
| | | | |
|---|---|---|---|
| C | D | F | E |
|---|---|---|---|
- (3)

| | | | |
|---|---|---|---|
| F | E | A | B |
|---|---|---|---|
- (4)

| | | | |
|---|---|---|---|
| C | D | A | B |
|---|---|---|---|

- A) 1
- B) 2
- C) 3
- D) 4

The diagram shows the positions of 3 ring magnets when they are put through a wooden rod.

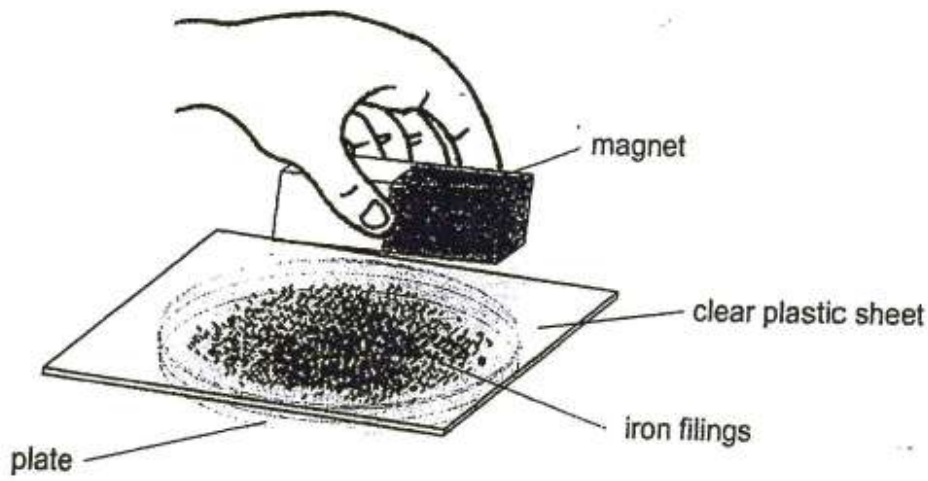


Which one of the following shows correctly the poles marked A and B?

| | A | B |
|-----|-------|-------|
| (1) | north | north |
| (2) | north | south |
| (3) | south | south |
| (4) | south | north |

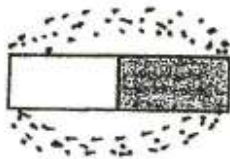
- A) 1
- B) 2
- C) 3
- D) 4

Susan poured some iron filings into a plate and placed a clear plastic sheet over the plate as shown below. She then placed a bar magnet on the clear plastic sheet and observed that the iron filings were attracted to the magnet.

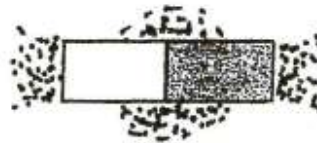


Which one of the following diagrams best shows what Susan would observe after some time?

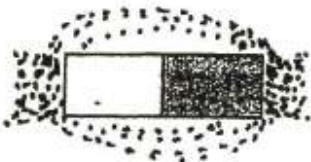
(1)



(2)



3)



(4)



- A) 1
- B) 2
- C) 3
- D) 4

James conducted an experiment with magnets, S, T and U.

He brought each magnet 3 cm away from a container of paper clips and recorded the number of paper clips attracted to each magnet in the table below.

He then heated each magnet over a candle flame for 10 minutes and repeated the experiment.

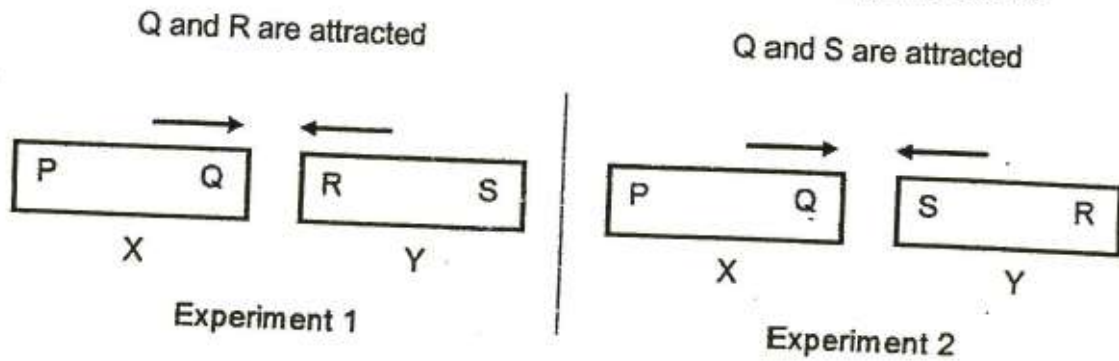
| Magnet | Number of paper clips attracted | |
|----------|---------------------------------|---------------|
| | Before heating | After heating |
| S | 7 | 0 |
| T | 13 | 0 |
| U | 5 | 0 |

Based on the results shown in the table above, what could James conclude?

- A Magnet S is the weakest magnet before heating.
- B Magnet T is the strongest magnet before heating.
- C Magnet U is the strongest magnet after heating.
- D All magnets lost their magnetism after being heated.

-
- A) A and C only
 - B) A and D only
 - C) B and C only
 - D) B and D only

Two objects, X and Y, are placed side by side as shown in the diagrams below.



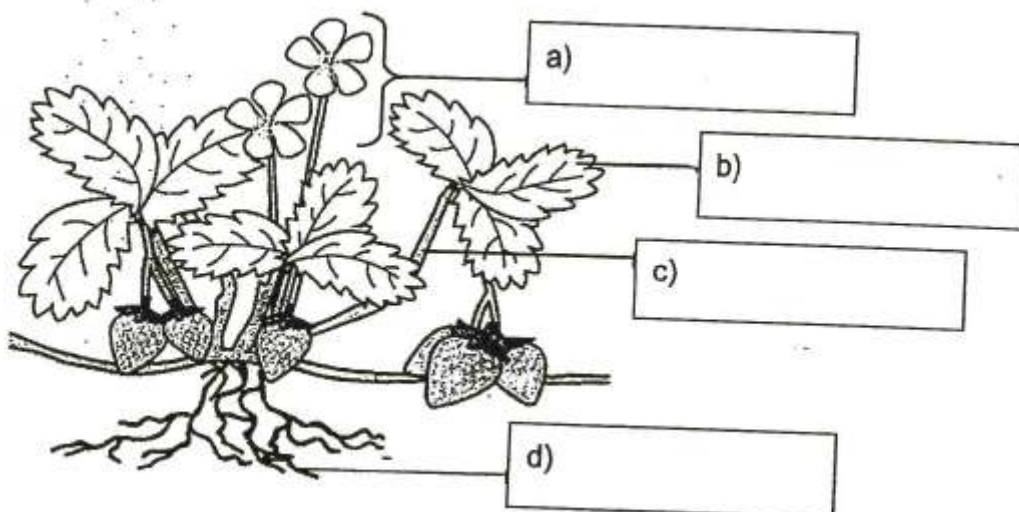
Based on the diagrams above, which of the following statement(s) is/are correct?

- A: One of the objects (X or Y) is a magnet.
- B: Q and R are **definitely** unlike poles.
- C: Both objects, X and Y, are made of magnetic materials.

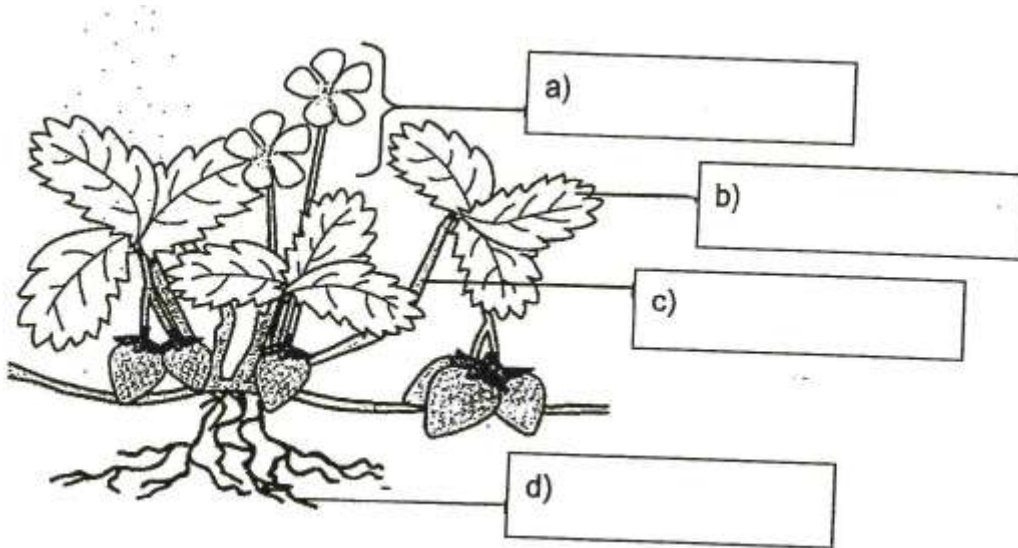
- A) A only
- B) C only
- C) A and B only
- D) A and C only

Section B : (14 marks)

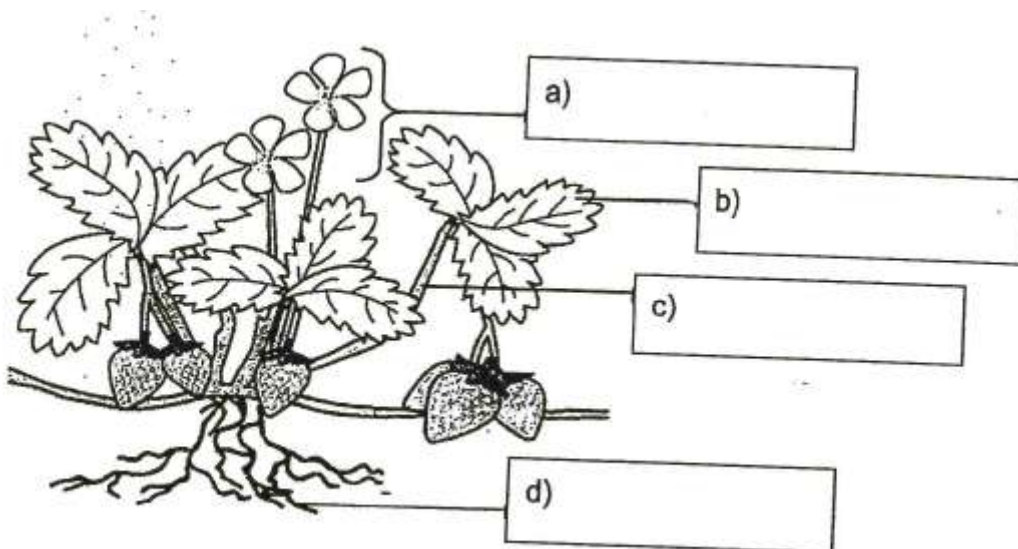
Type your answers to questions in the spaces given.



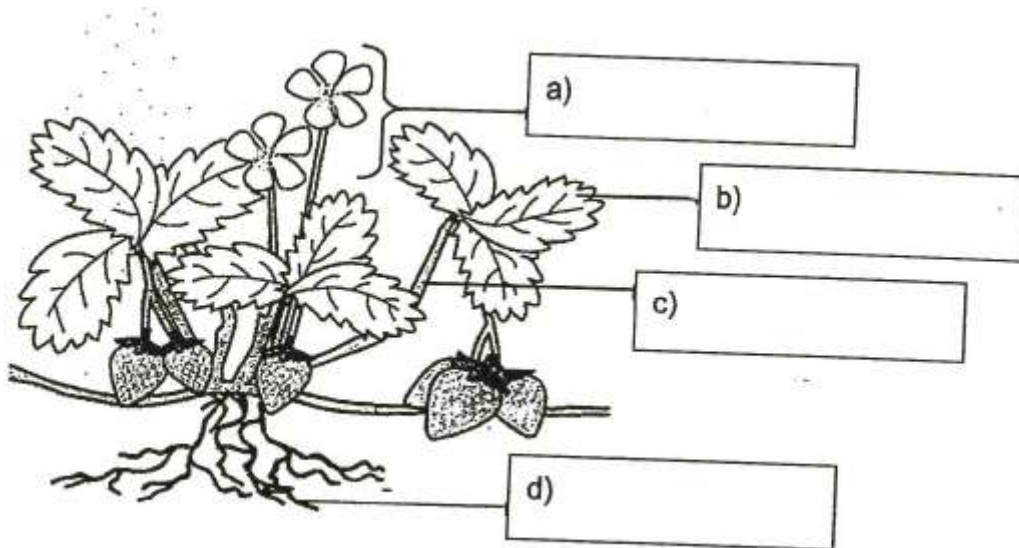
Identify and label part a shown in the diagram above.



Identify and label part b shown in the diagram above.

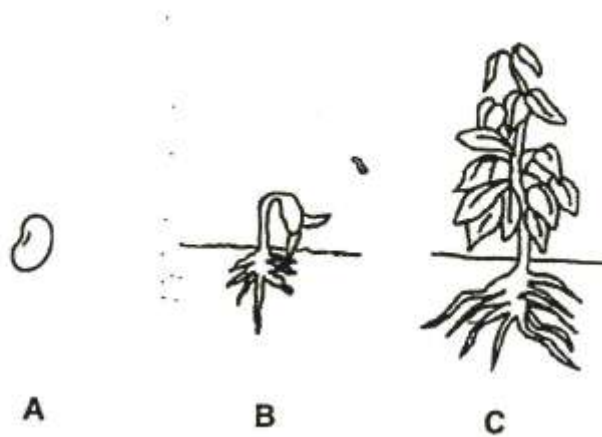


Identify and label part b shown in the diagram above.



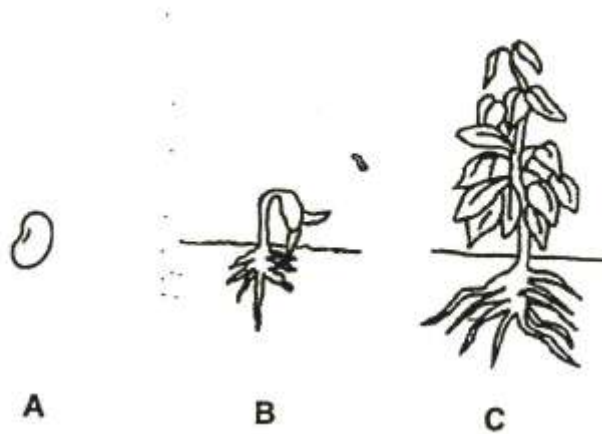
Identify and label part d shown in the diagram above.

The diagram below shows the 3 stages in the life cycle of a bean plant.



Name stage A in the life cycle of the bean plant.

The diagram below shows the 3 stages in the life cycle of a bean plant.



Name stage B in the life cycle of the bean plant.

A description of animal A is given below.

"I am a small animal. My body, which has a hard outer covering, is divided into three parts. I reproduce by laying eggs. What am I?"

Study the diagrams given below and put a tick (✓) in the box that represents animal A.

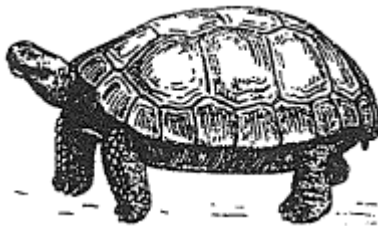
A)



B)



C)



D)



Put a tick (✓) beside the animal group that animal A belongs to.

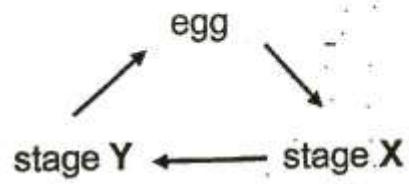
- A) Fish
- B) Bird
- C) Insect
- D) Mammal

Question 29 of 48

Primary 3 Science (Term 4)

1 pt

The diagram below shows the life cycle of a frog.



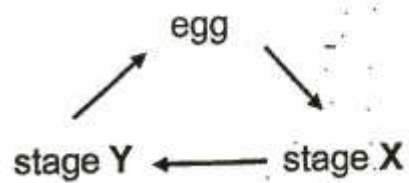
Name stage X.

Question 30 of 48

Primary 3 Science (Term 4)

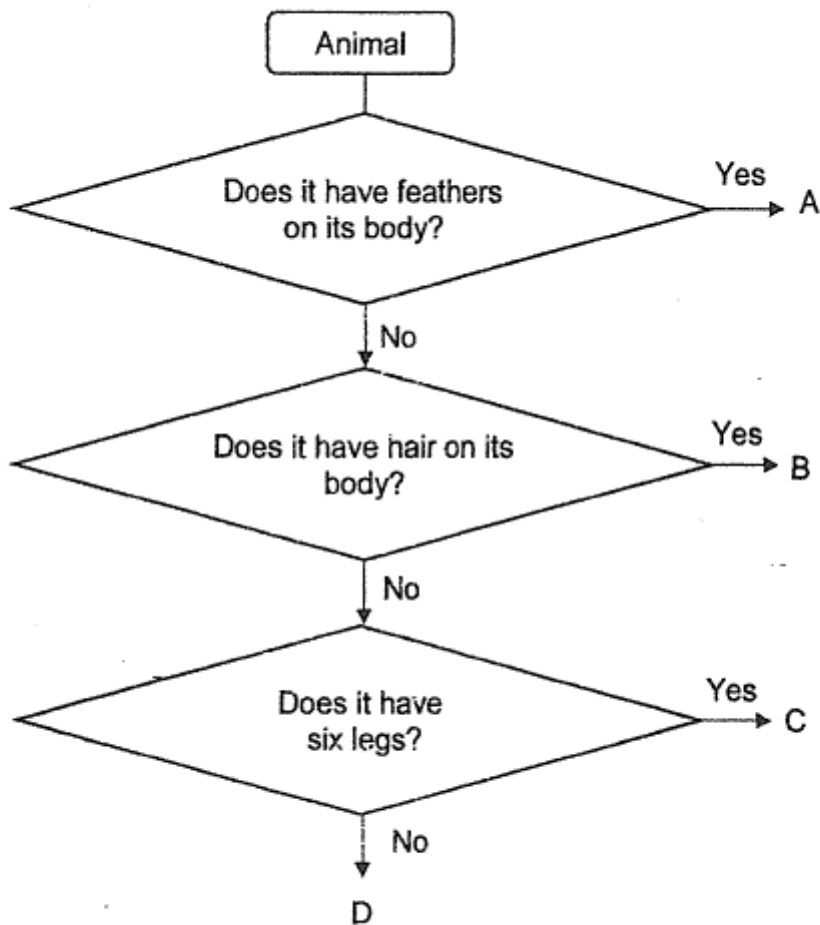
1 pt

The diagram below shows the life cycle of a frog.



Name stage Y.

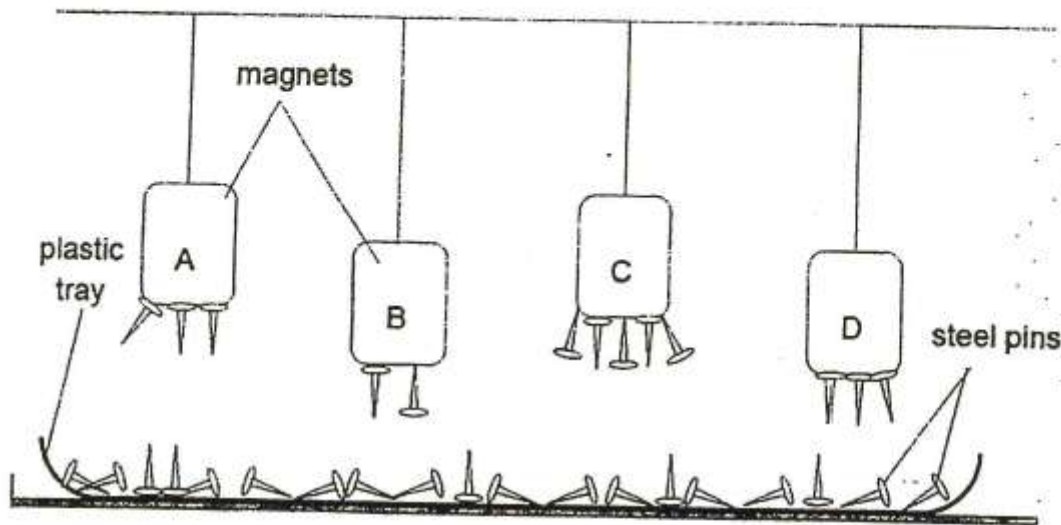
Study the flowchart below carefully.



Using the information in the flowchart, group the animals by writing the A, B, C or D in the correct boxes below.

| | | |
|--------|-----------|------|
| 1. [] | Cockroach | A. C |
| 2. [] | Chicken | B. A |
| 3. [] | Giraffe | C. D |
| 4. [] | Frog | D. B |

Magnets A, B, C and D are hanging from strings of two different lengths as shown in the diagram below. A plastic tray of steel pins is placed below the magnets. Each magnet attracts different number of steel pins.



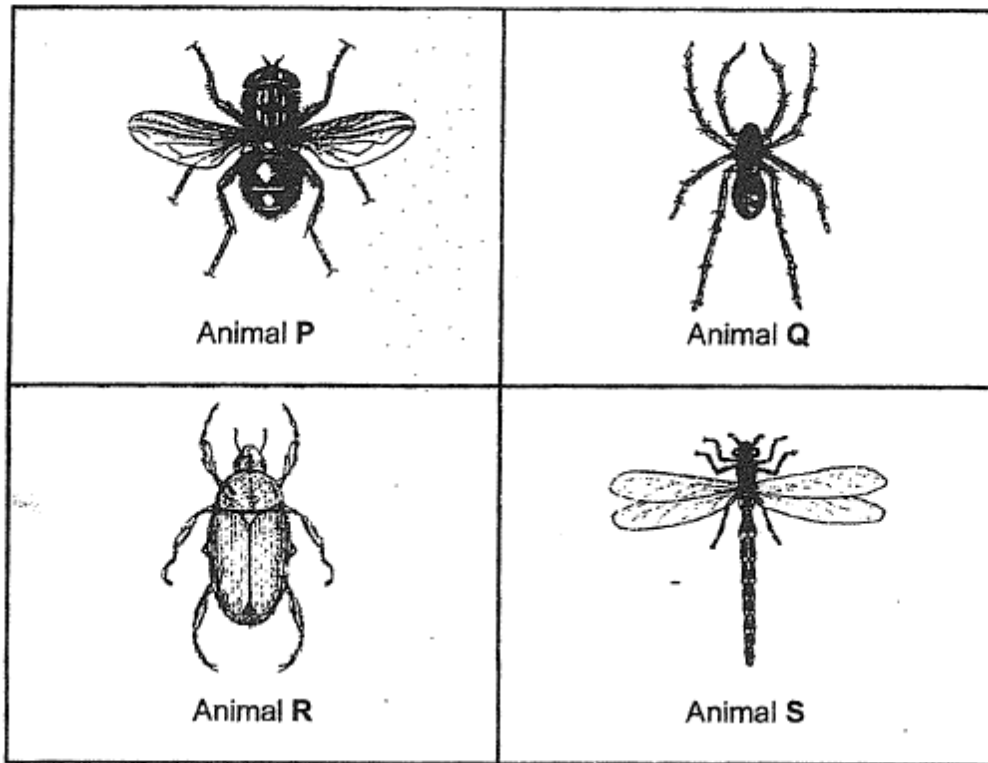
Based on the diagram above, arrange the magnets according to their magnetic force, from the magnet with the strongest magnetic force to the magnet with the weakest magnetic force.

Write A, B, C and D in the correct boxes provided below.

Strongest Magnetic Force
→
Weakest Magnetic Force

(Leave a comma between each alphabet)

27. Jane and Mary found four small animals (P, Q, R and S) as shown in diagram below.



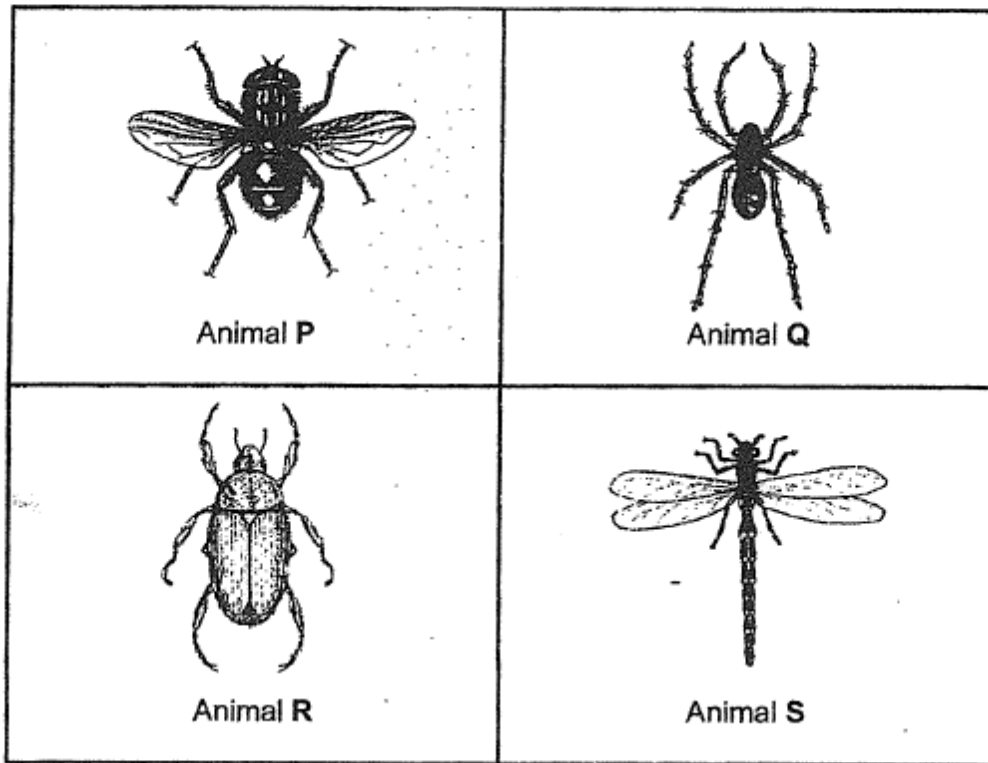
The girls observed these animals and made a table about their observations.

Complete the table below by adding the letters (P, Q, R and S) of the four animals in the correct boxes.

| Animal (Write P, Q, R or S) | | Number of wings | Number of legs | Number of feelers |
|--------------------------------|--|--------------------|-------------------|----------------------|
| (a) | | 0 | 6 | 2 |
| (b) | | 4 | 6 | 2 |
| (c) | | 0 | 8 | 0 |
| (d) | | 2 | 6 | 2 |

What is the answer for (a)?

27. Jane and Mary found four small animals (P, Q, R and S) as shown in diagram below.



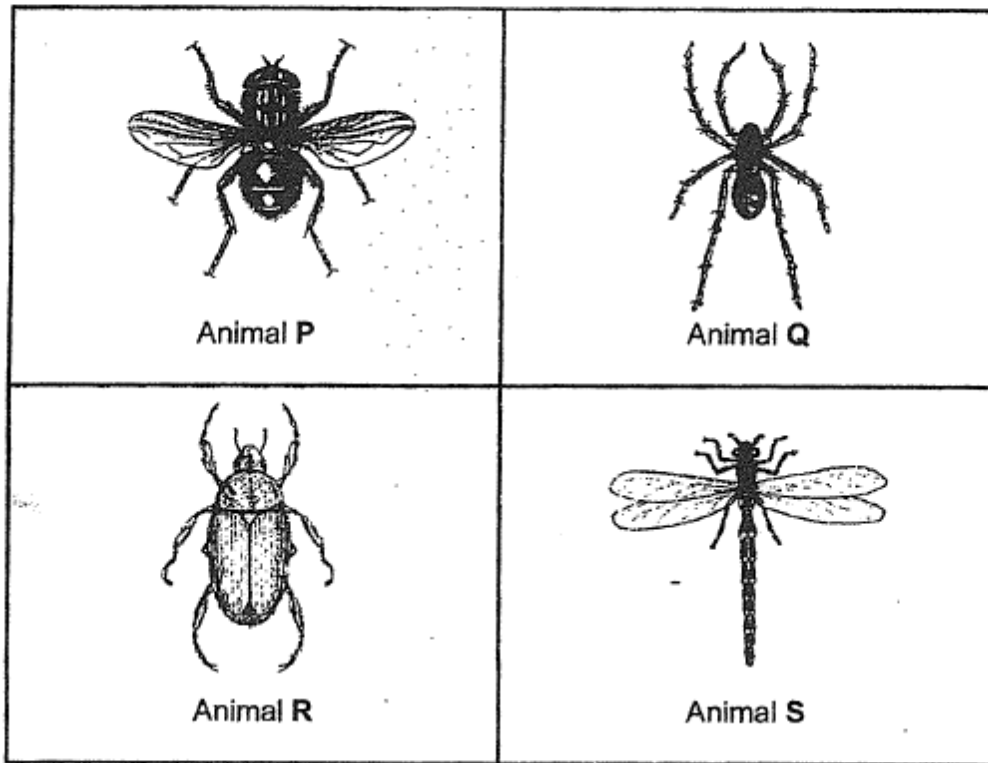
The girls observed these animals and made a table about their observations.

Complete the table below by adding the letters (P, Q, R and S) of the four animals in the correct boxes.

| Animal (Write P, Q, R or S) | | Number of wings | Number of legs | Number of feelers |
|--------------------------------|--|--------------------|-------------------|----------------------|
| (a) | | 0 | 6 | 2 |
| (b) | | 4 | 6 | 2 |
| (c) | | 0 | 8 | 0 |
| (d) | | 2 | 6 | 2 |

What is the answer for (b)?

27. Jane and Mary found four small animals (P, Q, R and S) as shown in diagram below.



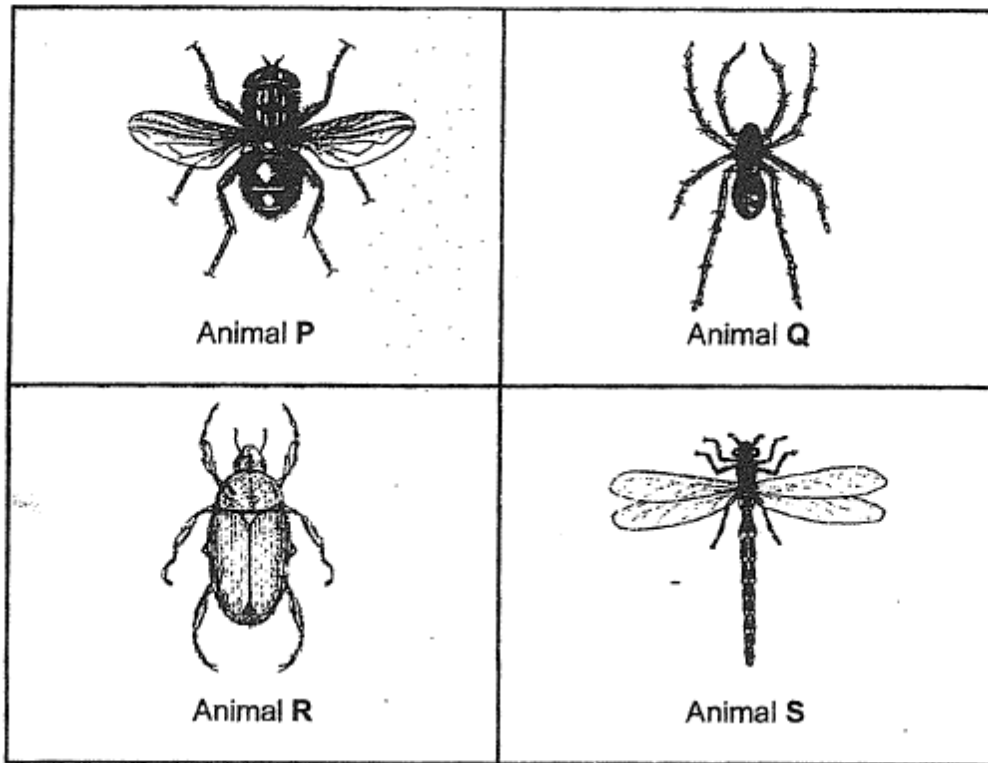
The girls observed these animals and made a table about their observations.

Complete the table below by adding the letters (P, Q, R and S) of the four animals in the correct boxes.

| Animal (Write P, Q, R or S) | | Number of wings | Number of legs | Number of feelers |
|--------------------------------|--|--------------------|-------------------|----------------------|
| (a) | | 0 | 6 | 2 |
| (b) | | 4 | 6 | 2 |
| (c) | | 0 | 8 | 0 |
| (d) | | 2 | 6 | 2 |

What is the answer for (c)?

27. Jane and Mary found four small animals (P, Q, R and S) as shown in diagram below.



The girls observed these animals and made a table about their observations.

Complete the table below by adding the letters (P, Q, R and S) of the four animals in the correct boxes.

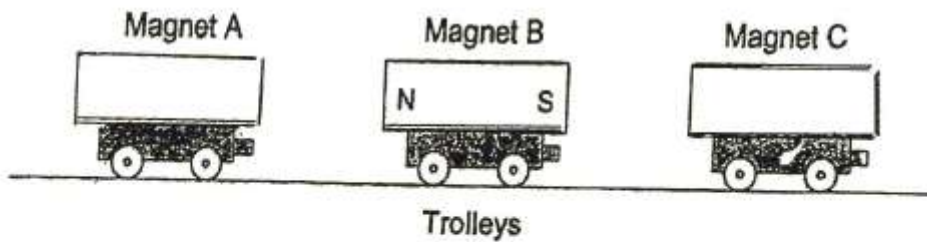
| Animal (Write P, Q, R or S) | | Number of wings | Number of legs | Number of feelers |
|--------------------------------|--|--------------------|-------------------|----------------------|
| (a) | | 0 | 6 | 2 |
| (b) | | 4 | 6 | 2 |
| (c) | | 0 | 8 | 0 |
| (d) | | 2 | 6 | 2 |

What is the answer for (d)?

The diagram below shows three trolleys.

Paul put a bar magnet on each trolley. He pushed the trolleys together.

- Magnet B attracted magnet A.
- Magnet B repelled magnet C.



On the diagrams above, write the North and South poles of magnets A and C using the letters N and S.

This question is designed for extended answers that parent/ teacher will have to assign and guide child to attempt after the test has been completed.

Grading: This question type is not graded on this system and will not affect the final score as it was designed in such a way that it requires manual assistance.

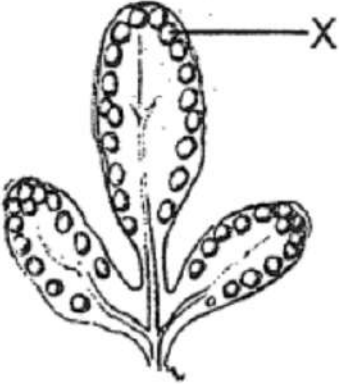
Section C

Type your answers in the spaces given.

Some of the questions in this section are designed for extended answers that parent/teacher will have to assign and guide child to attempt after the test has been completed.

Grading: This question type is not graded on this system and will not affect the final score as it was designed in such a way that it requires manual assistance.

Tiffany found plant P in her garden. She observed the plant and recorded the following observations.

| Observations of plant P | |
|---|---|
| <ul style="list-style-type: none"> • It is green in colour. • It has part X on the underside of its leaves which contains some brown powder. • It does not bear flowers. |  |

Name part X. _____

[1]

Can plant P produce fruit? Explain your answer.

[2]

Alex observed animals, D and E, over a period of time.



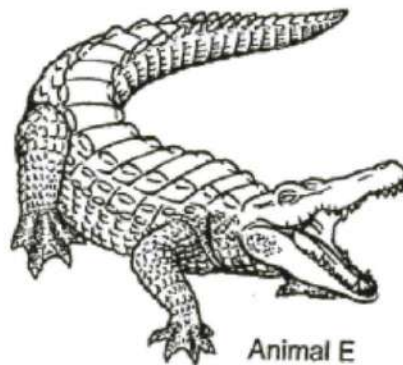
A young of animal D

Animal D has moist skin as outer covering. The adult lives on land and lays eggs on the surface of a pond.

A few weeks later, some of the eggs hatched and its young lived in the pond until they grow into adults.

- a) Name the animal group that animal D belongs to.

[1]



Animal E

Animal E has scales and dry skin and lives on land. It lays eggs and its young were found near the water after they hatched from the eggs.

Alex concluded that animals D and E have many similar characteristics so they belong to the same animal group.

- b) Do you agree with Alex's conclusion? Explain why.

[2]

The diagrams below show the stages in the life cycle of a plant. They are not arranged in order.



P



Q



R

Use the diagrams shown above to answer the following questions.

Observe the **parts** of the plant at stages P and R.

- a) Based on your observation, state one **similarity** between the plant at stages P and R. [1]

- b) Based on your observation, state one **difference** between the plant at stages P and R. [1]

32. The table below shows the properties of three materials E, F and G.

| Material | Property | | | |
|----------|------------|----------|--------|-----------------------------|
| | Waterproof | Flexible | Strong | Allow light to pass through |
| E | ✓ | ✓ | | |
| F | ✓ | | ✓ | ✓ |
| G | | ✓ | ✓ | |

a) Based on the information given in the table above, state two properties of material G. [2]

Property 1 : _____

Property 2 : _____

b) The diagram below shows a pair of reading glasses.



Which material, E, F or G, is **most** suitable for making part X?

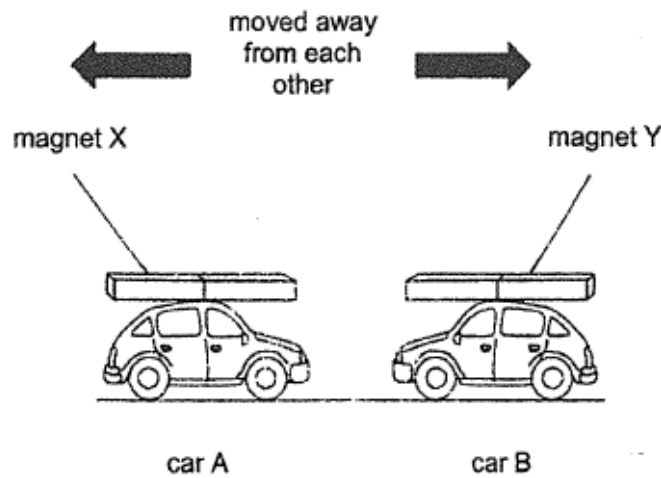
Explain your answer.

[2]

Material: _____

Explain: _____

33. Jett tied two similar magnets X and Y on two plastic toy cars, A and B.



- a) When the two plastic toy cars with the magnets were brought close to each other, they moved away from each other as shown in the diagram above.

Explain why this happened.

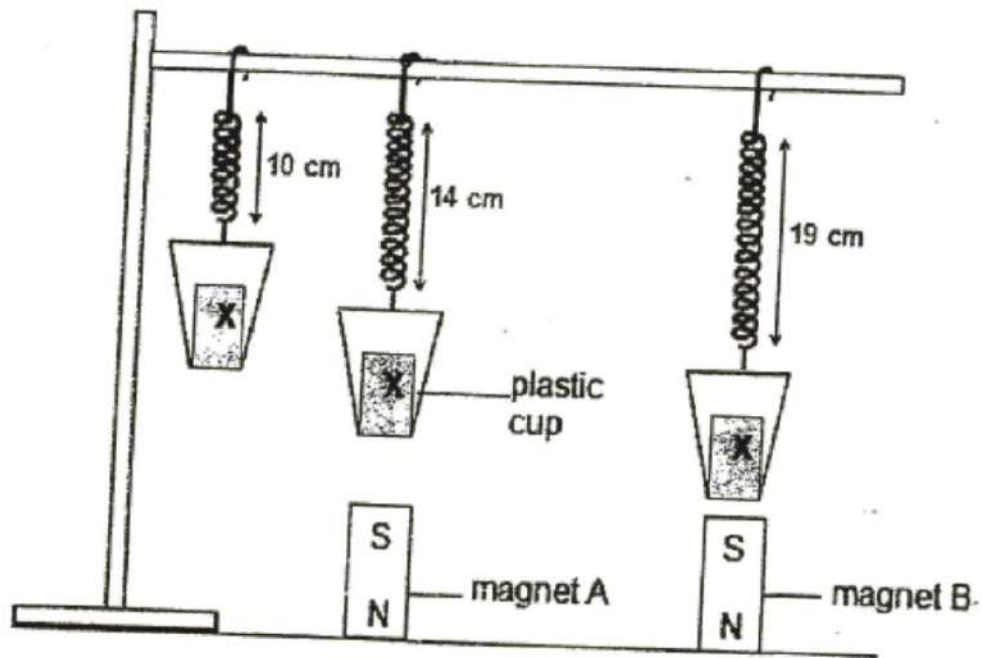
[2]

- b) What can Jett do to **magnet X** to make the two toy cars move towards each other?

[2]

Explain your answer.

The diagram below shows three identical plastic cups with object X in each one of them. The cups are attached to three identical springs. Object X is made of iron.



When magnets A and B were placed below the plastic cups, it was observed that the springs stretched longer.

Explain why the springs stretched longer.

[2]

i) Which magnet, A or B, is stronger?

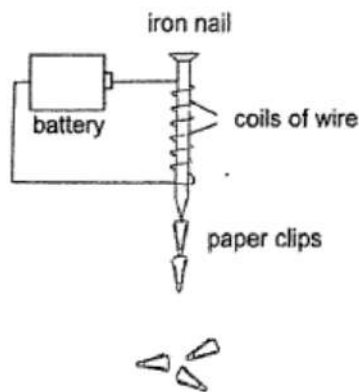
[1]

- A) A
- B) B

ii) Based on the diagrams shown above, explain your answer in (bi).

[1]

Mary prepared an experiment as shown in the diagram below.



a) Explain why the iron nail was able to attract the paper clips.

[1]

b) Suggest **two** ways Mary can increase number of paper clips attracted by the iron nail above.

[2]

i)

ii)

An iron nail was used in the above experiment.

c) Besides iron, **name** another suitable material the nail can be made of.

[1]
